



ISWK SHARING KNOWLEDGE

CLASS 7 – SCIENCE-2025-2026

HOLIDAY HOME ASSIGNMENT TERM I

TOPIC:

**Make a model of the Human Excretory system
&
Add a write-up on Dialysis**

Make a model of the Human
Excretory system
&
Add a write-up on Dialysis



GUIDELINES FOR THE MODEL OF EXCRETORY SYSTEM

- Create models of 2D/3D representation, preferably a working model of the Human Excretory system.

Key Parts to be included and labelled:

Kidneys (bean-shaped organs)

Ureters (tubes connecting kidneys to bladder)

Urinary Bladder (hollow structure to store urine)

Urethra (a tube through which urine is expelled)

GUIDELINES FOR THE WRITE-UP ON DIALYSIS

- Conduct detailed research on the concept of Dialysis / Artificial Kidneys and include a brief description.

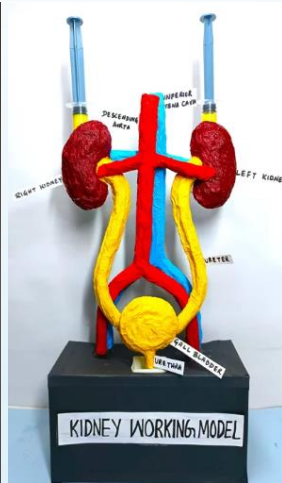
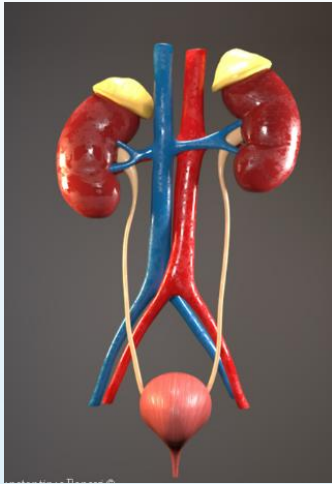
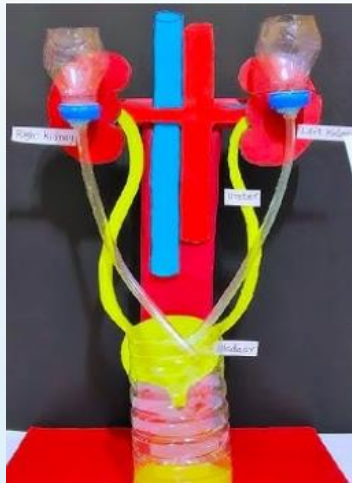
EVALUATION CRITERIA

- Originality
- Creativity
- Presentation
- Punctuality
- The activity will be graded by the respective Science teachers.
- Total Marks: 5

LAST DATE OF SUBMISSION: 24th August 2025 / SUNDAY



SAMPLE MODELS FOR REFERENCE





ISWK SHARING KNOWLEDGE

THANK YOU